

R220 R220 (EU) R220 X-Series

GEHL®

Form No.
50950171

Revision A
03/14

Skid-Steer Loader



PARTS MANUAL

Introduction

For your safety and continued proper operation, use only genuine GEHL® service parts. When ordering service parts, specify the correct part number, full description, quantity required, the unit model number and serial number.

The model and serial number decal for this unit is located on the left chassis upright. “Right” and “Left” are determined from a position sitting on the seat and facing forward.

Manitou Americas reserves the right to make changes or improvements in the design or construction of any part of the unit without incurring the obligation to install such changes on any previously delivered units.

NOTE: Purchase equivalent, quality tires for your loader. Contact your dealer for replacement tire information.

NOTE: Replacement batteries are not provided by the GEHL Company. For battery specifications see “Electrical-Chassis” chapter. **ALL REPLACEMENT BATTERIES MUST BE PURCHASED LOCALLY.**

Refer to the abbreviations table located on this page for the various fastener descriptions. Standard attaching hardware torque values are also provided on the inside back cover. **If a part requires lubrication or a nonstandard torque value, it will be specified behind the part number description in parenthesis.**

Items shown in the parts list that do not have part numbers are shown for reference purposes only and are NOT available for purchase.

Dimensions are in inches unless otherwise specified.

NOTE: The following abbreviations and symbols may be used herein:

| | | |
|---------|-------|-------------------------------------|
| A | | Ampere |
| AR | | As Required |
| ASSY | | ASSY |
| AUX | | Auxiliary |
| CCA | | Cold Cranking Amperage |
| CYL | | Cylinder |
| DH | | Dual Hand |
| DJS | | Dual Joystick |
| FL | | Flare |
| FOPS | | Falling Object Protective Structure |
| GA | | Gauge |
| HEX | | Hexagon |
| H/F | | Hand/Foot |
| HF | | High-Flow |
| HYD | | Hydraulic |
| JIC | | Joint Industrial Council |
| kW | | Kilowatt |
| LBS | | Pounds |
| M | | Meter |
| MM (mm) | | Millimeter |
| NA | | Naturally Aspirated |
| N/A | | Not Applicable |
| NEG | | Negative |
| N•m | | Newton meter |
| NO | | Number |
| NPT | | National Pipe Thread |
| NSS | | Not Sold Separately |
| PN | | Part Number |
| POS | | Positive |
| PSI | | Pounds per Square Inch |
| QTY | | Quantity |
| REF | | Reference |
| REQ'D | | Required |
| ROPS | | Roll Over Protective Structure |
| RPM | | Revolutions Per Minute |
| SAE | | Society of Automotive Engineers |
| SN | | Serial Number |
| SQ | | Square |
| ST | | Straight |
| TB | | T-Bar |
| TB/JS | | T-Bar/Joystick |
| TURBO | | Turbocharger |
| V | | Volt |

TABLE OF CONTENTS

| DESCRIPTION | PAGE |
|-------------|------|
|-------------|------|

SECTION A: MAIN LOADER COMPONENT

| | |
|-----------------------------------------------------------------------------------------|-----|
| Chassis (includes HVAC, Heater-Only and Power-A-Tach [®]) | 1 |
| Grille and Engine Cover. | 19 |
| ROPS/FOPS Structure/Interior (includes Non-HVAC, Heater-Only and HVAC) | 23 |
| Restraint Bar. | 31 |
| Seat and Seat Belt Options | 33 |
| Lift Arm | 41 |
| Attachment Bracket (includes Power-A-Tach [®]) | 43 |
| Wheel Drives | 47 |
| Engine. | 49 |
| Air Cleaner/Exhaust | 55 |
| Radiator/Cooler | 59 |
| Hydrostatic System with Drive Motors | 61 |
| Hydraulics - Chassis (with Auxiliary Hydraulics and Hydraglide [™]) | 69 |
| Hydraulics - Lift Arm. | 93 |
| Controls - Wheel Drives - Lift/Tilt. | 97 |
| Controls - Engine | 109 |
| Electrical - Chassis (includes Hydraglide [™]). | 111 |
| Electrical - ROPS/FOPS. | 117 |
| Electrical - Lights | 123 |
| Electrical - Engine | 125 |
| Electrical - Control | 129 |
| Electrical - 14-Pin Auxiliary Connector. | 131 |
| Four-Point Lift | 133 |
| Sound Suppression | 135 |
| Brake Release. | 147 |
| Tires | 149 |
| Decals. | 152 |

SECTION B: HYDRAULIC COMPONENTS and HEATER/HVAC HOUSINGS

| | |
|---------------------------------------------------------------------|-----|
| Lift Cylinder. | 163 |
| Tilt Cylinder | 165 |
| Drive Motors with Parking Brake | 167 |
| Tandem Pumps | 171 |
| Gear Pumps - Single and Double | 179 |
| Self-Leveling Valve | 183 |
| Solenoid Valves - Lift and Tilt | 185 |
| Solenoid Valves - Brake, Joystick Supply and Brake Release. | 187 |
| Main Control Valves. | 189 |
| Hydraglide [™] Ride Control Manifold Valve | 193 |
| Condensor, Heater Housing and HVAC Housing Assembly | 195 |
| Foot Valve. | 197 |

(continued on next page)

TABLE OF CONTENTS

| DESCRIPTION | PAGE |
|-------------|------|
|-------------|------|

SECTION C: FILTER LISTING, KITS AND ACCESSORIES

| | |
|--------------------------------------------------------------------------------|------------|
| Filter Listing, Analysis Kits and Other Available Accessories | 198 |
| 50850001 Counterweight Kit | 199 |
| 50352739 Auxiliary Coupler Service Kits | 199 |
| 811496 Warning Lamp Kit | 200 |
| 811488 Rearview Mirror Kit | 201 |
| 811489 AM/FM Radio Kit | 202 |
| 3-Point Restraint - 2" Seat Belt 810426 and 3" Seat Belt 810427 | 203 |
| 50850344 Backup Alarm Kit for T-Bar Controls | 204 |
| 805855 Engine Block Heater Kit | 205 |
| 50850284 Cab Door Kit | 206 |
| 811487 Side Window Kit | 208 |
| Seat Belt Kits - 2" 810424 and 3" 810425 | 209 |
| Seat Kits - Suspension 810422 and Standard 810423 | 209 |
| 810946 Universal Radio Kit | 210 |
| 50850341 Dual Flasher Kit | 211 |
| 50850116 Impact-Resistant Front Door Kit | 212 |
| 50850328 Four-Point Lift Kit | 213 |
| 811486 Backup Alarm Kit for Dual Joystick and Hand/Foot | 214 |
| 50850357 Rear Wiper Kit | 215 |
| 50850374 Power-A-Tach Kit | 216 |
| 50450384 Completing Kit for all Power-A-Tach Kits | 218 |
| 50850396 Cab Heater Kit | 219 |
| 50850475 Electric Attachment Control Kit | 222 |
| 50850457 Single-Point Lift Kit | 223 |
| 50850556 Pre-Cleaner Kit (Non-DPF Models) | 224 |
| 50850572 (EU & X-Series) Backup Alarm Kit | 225 |

SECTION D: SCHEMATICS

| | |
|-----------------------------------------------------------|-------------------|
| Electrical Schematic - HVAC | 227 |
| Electrical Schematic - Heater/Defroster | 228 |
| Electrical Schematic - 14-Pin Connector | 229 |
| Hydrostatic/Hydraulic Schematic - Hand/Foot | 230 |
| Hydrostatic/Hydraulic Schematic - Dual Joystick | 231 |
| Hydrostatic/Hydraulic Schematic - T-Bar | 232 |
| Hydrostatic/Hydraulic Schematic - Dual Hand | 233 |
| Electrical Schematic - Engine | 234 |
| Electrical Schematic - Chassis | 236 |
| Electrical Schematic - ROPS | 238 |
| | |
| Numerical Index | 240 |
| O-Ring Table, Coupling & Adapter Torque Table | 255 |
| Torque Specifications Table | Inside Back Cover |

SECTION A: MAIN LOADER COMPONENTS

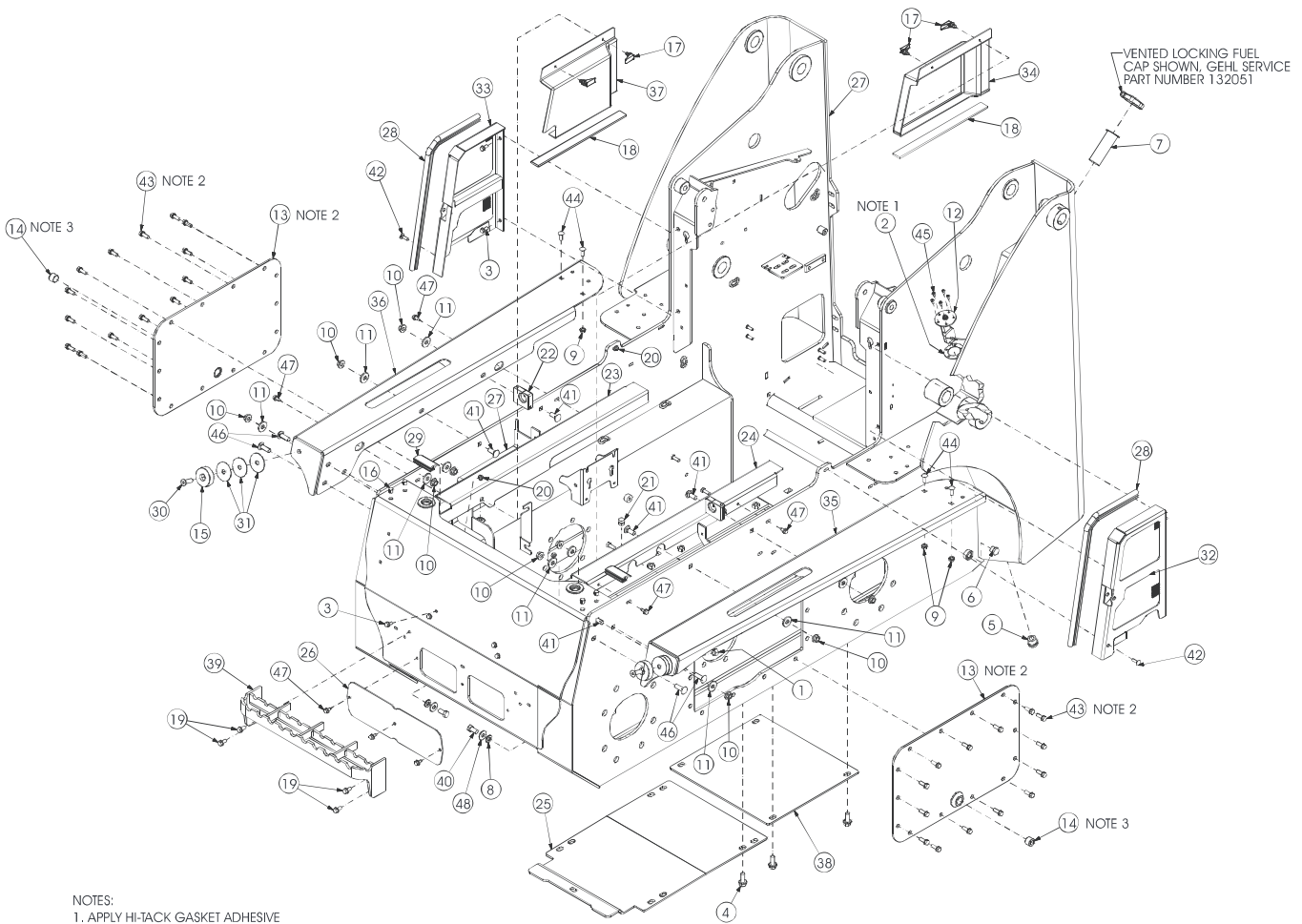
| | |
|----------------------------------------------------------------------------------|-----|
| Chassis (includes HVAC, Heater-Only and Power-A-Tach®) | 1 |
| Grille and Engine Cover | 19 |
| ROPS/FOPS Structure/Interior (includes Non-HVAC, Heater-Only and HVAC) | 23 |
| Restraint Bar | 31 |
| Seat and Seat Belt Options | 33 |
| Lift Arm | 41 |
| Attachment Bracket (includes Power-A-Tach®) | 43 |
| Wheel Drives | 47 |
| Engine | 49 |
| Air Cleaner/Exhaust | 55 |
| Radiator/Cooler | 59 |
| Hydrostatic System with Drive Motors | 61 |
| Hydraulics - Chassis (with Auxiliary Hydraulics and Hydraglide™) | 69 |
| Hydraulics - Lift Arm | 93 |
| Controls - Wheel Drives - Lift/Tilt | 97 |
| Controls - Engine | 109 |
| Electrical - Chassis (includes Hydraglide™) | 111 |
| Electrical - ROPS/FOPS | 117 |
| Electrical - Lights | 123 |
| Electrical - Engine | 125 |
| Electrical - Control | 129 |
| Electrical - 14-Pin Auxiliary Connector | 131 |
| Four-Point Lift | 133 |
| Sound Suppression | 135 |
| Brake Release | 147 |
| Tires | 149 |
| Decals | 152 |

CHASSIS

| Ref. No. | Part No. | Description | Quantity |
|----------|-----------|------------------------------------------------------|----------|
| 1 | 071706 | NUT/LOCK 1/2 | 2 |
| 2 | 072343 | GASKET/FUEL SENDER | 1 |
| 3 | 081380 | SCREW/CAP HEX FLANGE LOCKING 5/16 X 3/4 | 8 |
| 4 | 090666 | NUT/LOCK SERRATED FLANGE 3/8 | 4 |
| 5 | 092164 | SCREW/CAP HEX FLANGE LOCKING 1/2 X 1-1/4 | 6 |
| 6 | 131522 | PLUG MORB12 | 1 |
| 7 | 131529 | PLUG MORB08 | 1 |
| 8 | 132050 | STRAINER/FUEL FILL | 1 |
| | 650702 | SCREW/TAPPING PAN HEAD THREAD FORMING #6 X 3/8 | 2 |
| 9 | 132298 | WASHER/SEAL | 2 |
| 10 | 134853 | NUT/SPIRALOCK™ 1/2 | 10 |
| 11 | 138593 | ASSY/CHAINCASE COVER | 2 |
| 12 | 184670 | PLUG/PIPE SQUARE SOCKET MP12 | 2 |
| 13 | 189144 | STOP/DOWN | 2 |
| 14 | 191826 | PLUG/HOLE | 4 |
| 15 | 193706 | LATCH/SWELL | 4 |
| 16 | 194271 | STRIP/FOAM 1/4 X 1-1/2 X 15-13/16 | 2 |
| 17 | 195138 | SCREW/TAPPING HEX WASHER HEAD THREAD ROLL 3/8 X 3/4 | 4 |
| 18 | 210-19470 | NUT/HEX FLANGE SERRATED LOCK 5/16 | 6 |
| 19 | 230-32588 | VENT/AIR | 2 |
| 20 | 240903 | PLUG/PASS THROUGH | 2 |
| 21 | 241233 | FILLER/ROPS RIGHT | 1 |
| 22 | 241234 | FILLER/ROPS LEFT | 1 |
| 23 | 241397 | PAN/BELLY | 1 |
| 24 | 242675 | COVER/CLEAN-OUT | 1 |
| 25 | 244559 | SEAL/BULB 90° | 2 |
| 26 | 245238 | SEAL/FILLER PLATE | 2 |
| 27 | 310-32585 | SCREW/CAP FLAT HARDENED 1/2 X 1-1/2 | 2 |
| 28 | 310-32624 | SCREW/CAP SELF-TAPPING #10 X 5/8 | 5 |
| 29 | 360-32599 | SHIM | 6 |
| 30 | 50302792 | SENDER/FUEL | 1 |
| 31 | 50350493 | CHASSIS SIDE COVER/LEFT | 1 |
| 32 | 50350496 | CHASSIS SIDE COVER/RIGHT | 1 |
| 33 | 50350568 | COVER/LOWER LEFT | 1 |
| 34 | 50350570 | FENDER/WLDMT/LEFT | 1 |
| 35 | 50350572 | FENDER/WLDMT/RIGHT | 1 |
| 36 | 50350573 | COVER/LOWER RIGHT | 1 |
| 37 | 50352443 | COVER/CHASSIS | 1 |
| 38 | 50352769 | STEP | 1 |
| 39 | 50353762 | WLDMT/CHASSIS | 1 |
| 40 | 650494 | SCREW/CAP 1/2 X 1 | 2 |
| 41 | 650527 | BOLT/CARRIAGE ROUND HEAD SQUARE NECK 1/2 X 1-14 | 10 |
| 42 | 650573 | BOLT/CARRIAGE 5/16 X 1 | 2 |
| 43 | 651042 | SCREW/MACHINE HEX WASHER HEAD 3/8 X 1 | 28 |
| 44 | 651067 | BOLT/CARRIAGE ROUND HEAD SQUARE NECK 3/8 X 1 | 4 |
| 45 | 651648 | SCREW/TAPPING HEX WASHER HEAD THREAD ROLL 5/16 X 3/4 | 7 |
| 46 | 654046 | WASHER/FLAT 7/16 | 2 |
| 47 | L43846 | PLUG MP08 | 2 |

CHASSIS

SN 173612 and Before

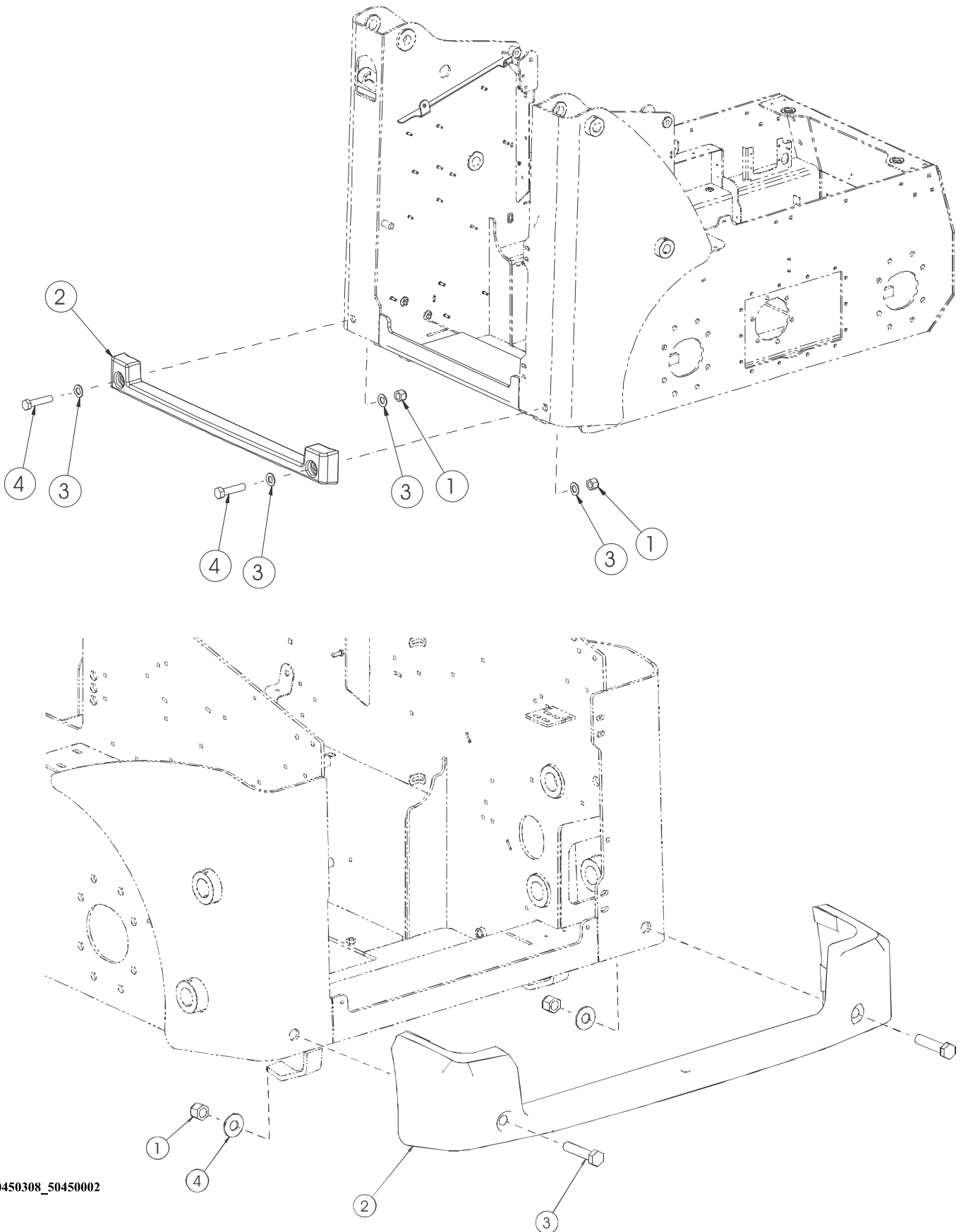


CHASSIS

| Ref. No. | Part No. | Description | Quantity |
|----------|-----------|-----------------------------------------------------------|----------|
| 1 | 071706 | NUT/LOCK 1/2 | 2 |
| 2 | 072343 | GASKET/FUEL SENDER | 1 |
| 3 | 081380 | SCREW/CAP HEX FLANGE LOCKING 5/16 X 3/4 | 8 |
| 4 | 092164 | SCREW/CAP HEX FLANGE LOCKING 1/2 X 1-1/4 | 6 |
| 5 | 131522 | PLUG MORB12 | 1 |
| 6 | 131529 | PLUG MORB08 | 1 |
| 7 | 132050 | STRAINER/FUEL FILL | 1 |
| | 650702 | SCREW/TAPPING PAN HEAD THREAD FORMING #6 X 3/8 | 2 |
| 8 | 132298 | WASHER/SEAL | 2 |
| 9 | 090666 | NUT/LOCK SERRATED FLANGE 3/8 | 4 |
| 10 | 134853 | NUT/SPIRALOCK™ 1/2 | 10 |
| 11 | 134966 | WASHER/FLAT HARDENED 1/2 | 10 |
| 12 | 136013 | FUEL SENSOR/VDO | 1 |
| 13 | 138593 | ASSY/CHAINCASE COVER | 2 |
| 14 | 184670 | PLUG/PIPE SQUARE SOCKET MP12 | 2 |
| 15 | 189144 | STOP/DOWN | 2 |
| 16 | 191826 | PLUG/HOLE | 4 |
| 17 | 193706 | LATCH/SWELL | 4 |
| 18 | 194271 | STRIP/FOAM 1/4 X 1-1/2 X 15-13/16 | 2 |
| 19 | 195138 | SCREW/TAPPING HEX WASHER HEAD THREAD ROLL 3/8 X 3/4 | 4 |
| 20 | 210-19470 | NUT/HEX FLANGE SERRATED LOCK 5/16 | 6 |
| 21 | 230-32588 | VENT/AIR | 2 |
| 22 | 240903 | PLUG/PASS THROUGH | 2 |
| 23 | 241233 | FILLER/ROPS RIGHT | 1 |
| 24 | 241234 | FILLER/ROPS LEFT | 1 |
| 25 | 241397 | PAN/BELLY | 1 |
| 26 | 242675 | COVER/CLEAN-OUT | 1 |
| 27 | 244230 | CHASSIS/WLDMT | 1 |
| 28 | 244559 | SEAL/BULB 90° | 2 |
| 29 | 245238 | SEAL/FILLER PLATE | 2 |
| 30 | 310-32585 | SCREW/CAP FLAT HARDENED 1/2 X 1-1/2 | 2 |
| 31 | 360-32599 | SHIM | 6 |
| 32 | 50350493 | CHASSIS SIDE COVER/LEFT | 1 |
| 33 | 50350496 | CHASSIS SIDE COVER/RIGHT | 1 |
| 34 | 50350568 | COVER/LOWER LEFT | 1 |
| 35 | 50350570 | FENDER/WLDMT/LEFT | 1 |
| 36 | 50350572 | FENDER/WLDMT/RIGHT | 1 |
| 37 | 50350573 | COVER/LOWER RIGHT | 1 |
| 38 | 50352443 | COVER/CHASSIS | 1 |
| 39 | 50352769 | STEP | 1 |
| 40 | 650494 | SCREW/CAP 1/2 X 1 | 2 |
| 41 | 650527 | BOLT/CARRIAGE 1/2 X 1-14 | 6 |
| 42 | 650573 | BOLT/CARRIAGE 5/16 X 1 | 2 |
| 43 | 651042 | SCREW/MACHINE HEX WASHER HEAD 3/8 X 1 | 28 |
| 44 | 651067 | BOLT/CARRIAGE ROUND HEAD SQUARE NECK 3/8 X 1 | 4 |
| 45 | 651312 | SCREW/MACHINE TRUSS HEAD SLOTTED CROSS-RECESSED #10 X 1/2 | 5 |
| 46 | 651324 | BOLT/CARRIAGE ROUND HEAD SQUARE NECK 1/2 X 1-1/2 | 4 |
| 47 | 651648 | SCREW/TAPPING HEX WASHER HEAD THREAD ROLL 5/16 X 3/4 | 7 |
| 48 | 654046 | WASHER/FLAT 7/16 | 2 |

CHASSIS

Rear Bumper and Counterweight



50450308_50450002

CHASSIS

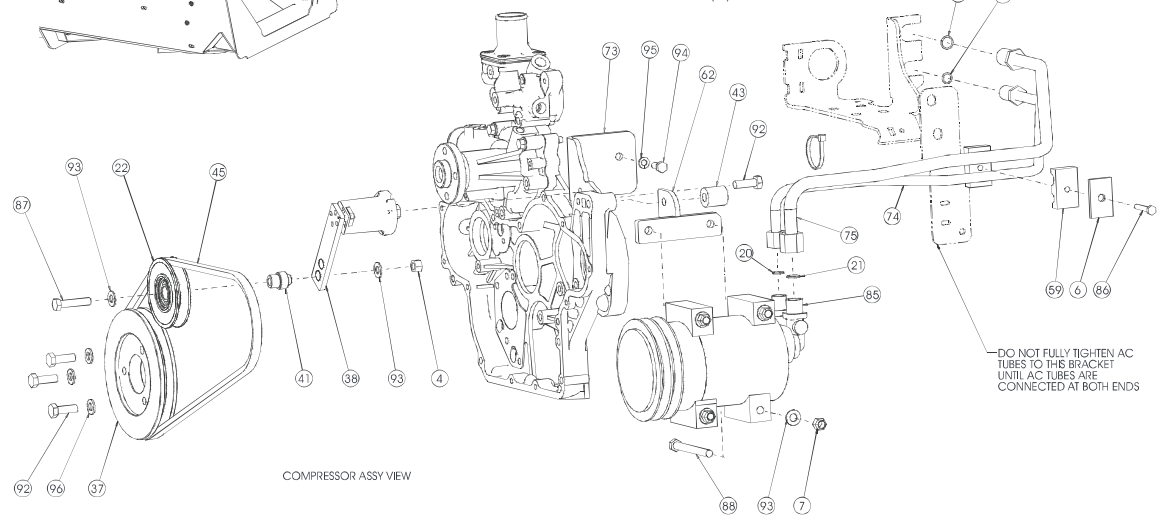
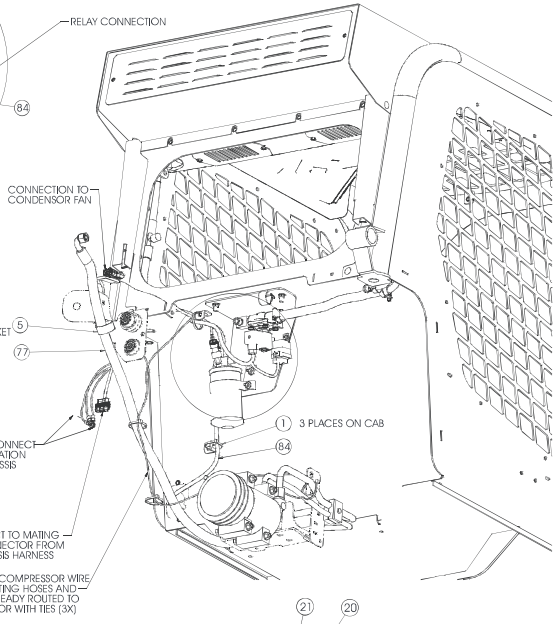
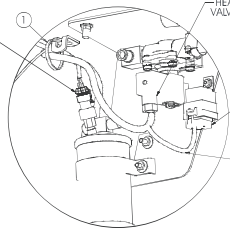
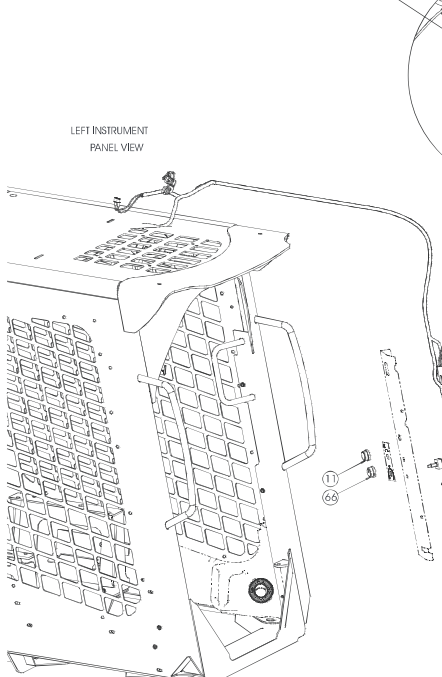
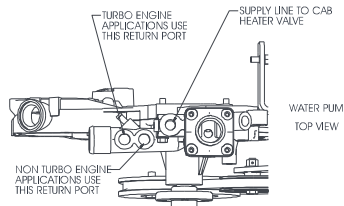
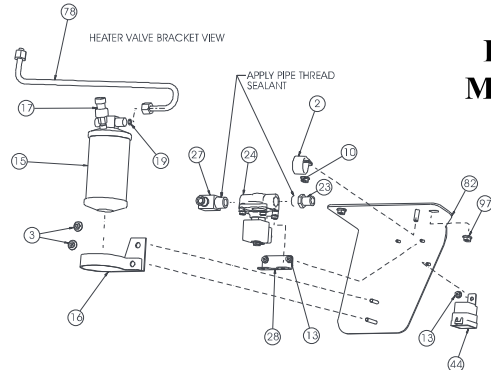
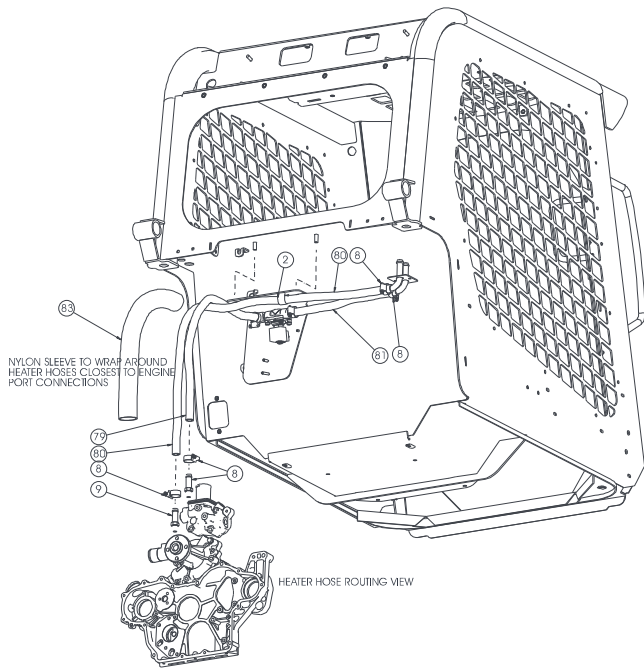
| Ref. No. | Part No. | Description | Quantity |
|-----------------|-----------------|---------------------|-----------------|
| 1 | 132681 | NUT/HEX LOCK 1.00 | 2 |
| 2 | 50350599 | BUMPER/REAR-CASTING | 1 |
| 3 | 651151 | WASHER/FLAT 1.00 | 4 |
| 4 | 651628 | SCREW/CAP 1 X 3-3/4 | 2 |

| Ref. No. | Part No. | Description | Quantity |
|-----------------|-----------------|---------------------|-----------------|
| 1 | 132681 | NUT/HEX LOCK 1.00 | 2 |
| 2 | 244322 | COUNTERWEIGHT/CAST | 1 |
| 3 | 651816 | SCREW/CAP 1 X 4-1/2 | 2 |
| 4 | 654016 | WASHER/FLAT 1.00 | 2 |

CHASSIS

**HVAC
Models**

**DPF
Models**



50450152

CHASSIS

| Ref. No. | Part No. | Description | DPF Models HVAC Quantity |
|----------|-----------|--------------------------------------------------------|--------------------------|
| 1 | 055648 | TIE/CABLE 3/16 X 7-1/2 | 6 |
| 2 | 058805 | CLAMP/HOSE 1-1/8 X 13/32 HOLE | 1 |
| 3 | 070634 | NUT/LOCK LARGE FLANGE SERRATED LOCK 1/4 | 2 |
| 4 | 071703 | NUT/LOCK HEX 3/8 | 1 |
| 5 | 075196 | CLAMP/HOSE 1-1/2 X 13/32 HOLE | 1 |
| 6 | 079098 | PLATE/TOP SIZE 2 TWIN FLAT | 1 |
| 7 | 094762 | NUT/LOCK OVAL TOP 3/8 | 4 |
| 8 | 095955 | CLAMP/HOSE #10 | 14 |
| 9 | 104052 | FITTING/STRAIGHT HB10-MBSPT06 | 2 |
| 10 | 131842 | NUT/SPIRALOCK™ 5/16 | 5 |
| 11 | 136304 | KNOB/HEATER SWITCH | 1 |
| 12 | 136305 | SWITCH/HEATER | 1 |
| 13 | 137797 | NUT/WHIZLOCK SERRATED FLANGE #10 | 3 |
| 14 | 195110 | SCREW/TAPPING CROSS RECESSED COUNTERSUNK HEAD #8 X 1/2 | 16 |
| 15 | 138649 | RECEIVER/DRYER/AC | 1 |
| 16 | 138651 | CLAMP/RECEIVER DRYER | 1 |
| 17 | 138714 | SWITCH/BINARY/AC | 1 |
| 18 | 138723 | VALVE/EXPANSION/AC | 1 |
| | 194935 | KIT/O-RING | 1 |
| 19 | 138777 | O-RING/AC/#6 FITTING | 6 |
| 20 | 138778 | O-RING/AC/#8 FITTING | 4 |
| 21 | 138779 | O-RING/AC/#10 FITTING | 5 |
| 22 | 139952 | PULLEY/VEE W/BEARING | 1 |
| 23 | 186193 | FITTING/STRAIGHT HB10-MP08 | 1 |
| 24 | 186703 | HEATER/AC SOLENOID VALVE | 1 |
| 25 | 187030 | CAP/DRIP | 2 |
| 26 | 189033 | MODULE/AC CONTROL | 1 |
| 27 | 191351 | FITTING/ELBOW 90° 1/2 NPT | 1 |
| 28 | 193002 | BRACKET/HEATER VALVE | 1 |
| 29 | 195585 | TUBE/AC #10 | 1 |
| 30 | 195588 | TUBE/AC/#6 | 1 |
| 31 | 195605 | HOSE/#6/AC | 1 |
| 32 | 195606 | HOSE/#10/AC | 1 |
| 33 | 195660 | FILTER/HVAC FRESH AIR | 1 |
| 34 | 210-19470 | NUT/HEX FLANGE SERRATED LOCK 5/16 | 4 |
| 35 | 240461 a | ASSY/MAIN HVAC HOUSING | 1 |
| 36 | 240503 | PAD/INSULATION | 1 |
| 37 | 241008 | PULLEY/CRANK/AC/YANMAR | 1 |
| 38 | 241010 | TENSIONER/BELT | 1 |
| 39 | 241208 | PLATE/HEATER TUBES | 1 |
| 40 | 241209 | HOSE/HEATER | 2 |
| 41 | 241385 | SPACER/PULLEY | 1 |
| 42 | 241486 | PLATE/COVER LOUVERED | 1 |
| 43 | 241844 | SPACER/ALTERNATOR | 1 |
| 44 | 242145 | RELAY/SEALED | 1 |
| 45 | 50354368 | BELT/AC | 1 |
| 46 | 242437 | VENT | 4 |
| 47 | 242534 | PLUG/PASS-THROUGH TUBE | 2 |
| 48 | 242537 | TUBE/FORWARD HVAC | 2 |
| 49 | 242831 | COVER/RECIRC | 2 |
| 50 | 242832 | FILTER/RECIRC | 2 |
| 51 | 242833 | PAD/SEALING FILTER | 2 |

a) For breakdown see "Section B" of this manual.

Parts Listing Continued On Next Page

CHASSIS

CONNECT THESE BLACK AND RED WIRES TO THE CORRESPONDING COLORED WIRES ON THE HVAC HOUSING HARNESS.

CONNECT QUICK DISCONNECTS TO PRESET COLD CONTROL SWITCH

- AC SYSTEM EVACUATION AND CHARGE PROCEDURE & SPECS.:
1. EVACUATE SYSTEM TO VACUUM OF APPROXIMATELY 30 IN. OF Hg. FOR 25 MINUTES MINIMUM AND HOLD FOR 10 MINUTES MINIMUM.
 2. CHECK FOR PRESSURE CHANGE.
 3. ADD 1 OZ. PAG L100 OIL.
 4. ADD 2.6 LBS. OF R134A REFRIGERANT.
 5. CHECK ENTIRE SYSTEM FOR ANY REFRIGERANT LEAK

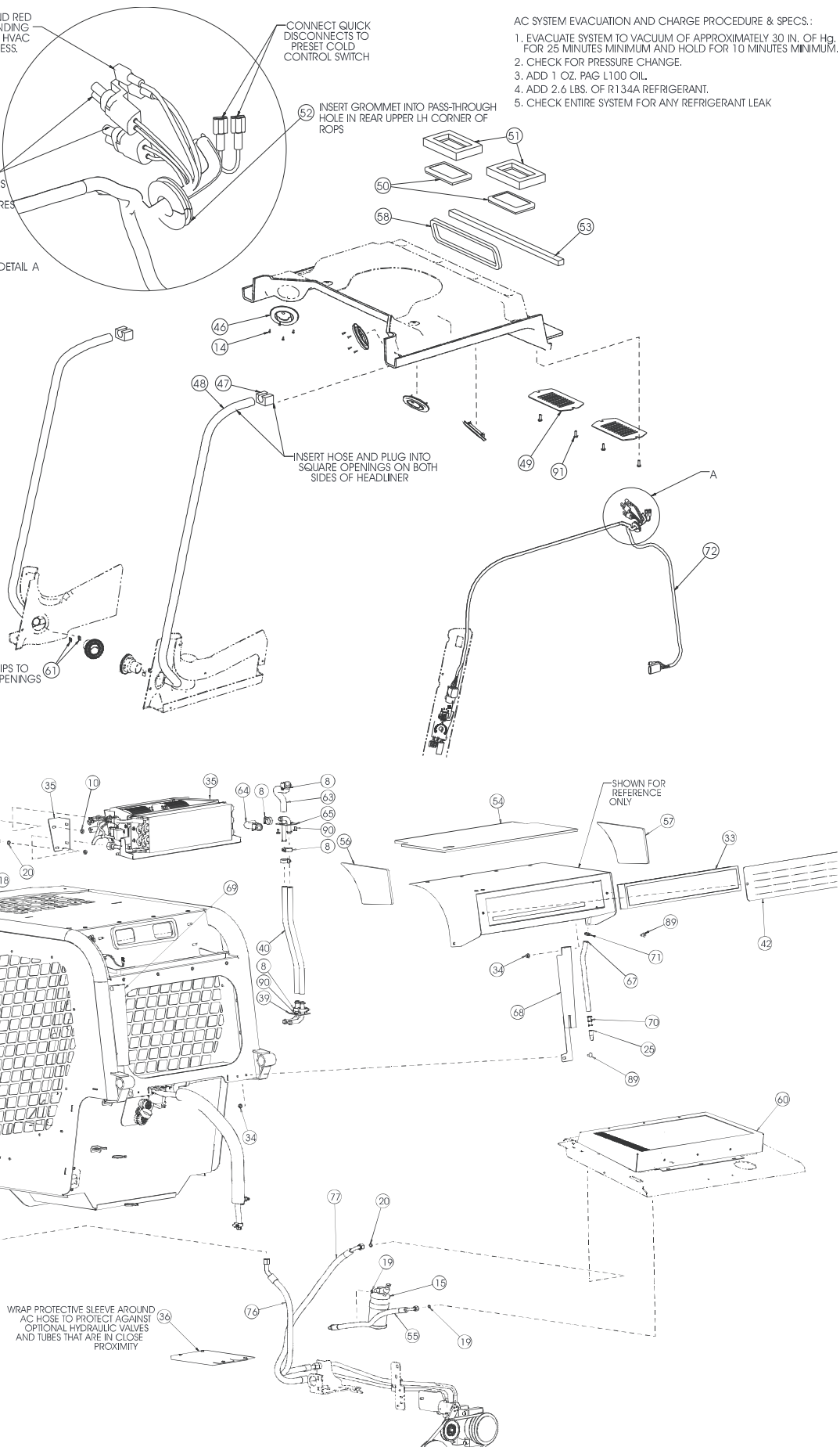
CONNECT THESE WEATHERPACK CONNECTORS TO THE CONNECTORS ON THE HVAC HOUSING HARNESS WITH CORRESPONDING COLORED WIRES

DETAIL A

HVAC Models DPF Models

FASTEN CLIPS TO LOUVER OPENINGS

INSERT HOSE AND PLUG INTO SQUARE OPENINGS ON BOTH SIDES OF HEADLINER



WRAP PROTECTIVE SLEEVE AROUND AC HOSE TO PROTECT AGAINST OPTIONAL HYDRAULIC VALVES AND TUBES THAT ARE IN CLOSE PROXIMITY

continued from previous page

| Ref. No. | Part No. | Description | DPF Models HVAC Quantity |
|----------|----------|--------------------------------------------------------|--------------------------|
| 52 | 242862 | GROMMET/HVAC COMPT | 1 |
| 53 | 242863 | PAD/FOAM SEALING STRIP | 1 |
| 54 | 242917 | PAD/HOUSING TOP | 1 |
| 55 | 242971 | HOSE/#6 A/C | 1 |
| 56 | 243013 | PAD/HOUSING LEFT | 1 |
| 57 | 243014 | PAD/HOUSING RIGHT | 1 |
| 58 | 243017 | PAD/HVAC HEADLINER SEAL | 1 |
| 59 | 243033 | CLAMP/TUBE/TWIN/AC | 2 |
| 60 | 243076 a | ASSY/CONDENSER | 1 |
| 61 | 243445 | CLIP/HOSE RETAINING | 4 |
| 62 | 243493 | BRACKET/COMPRESSOR | 1 |
| 63 | 243737 | HOSE/MOLDED HEATER (SUPPLY) | 1 |
| 64 | 243738 | HOSE/MOLDED HEATER (RETURN) | 1 |
| 65 | 243741 | TUBE/HEATER | 1 |
| 66 | 244496 | KNOB/HVAC TEMP CONTROL | 1 |
| 67 | 244770 | TUBE/DRAIN HVAC | 2 |
| 68 | 244813 | COVER/DRAIN HVAC RIGHT | 1 |
| 69 | 244814 | COVER/DRAIN HVAC LEFT | 1 |
| 70 | 244815 | HOSE/MENDER 1/2 HOSE | 2 |
| 71 | 245235 | CLAMP/HOSE WIRE 3/4 OD | 2 |
| 72 | 50351041 | HARNESS/HVAC CAB | 1 |
| 73 | 50351254 | BRACKET/TENSIONER | 1 |
| 74 | 50351749 | TUBE/AC HIGH PRESSURE | 1 |
| 75 | 50351750 | TUBE/AC LOW PRESSURE | 1 |
| 76 | 50352030 | HOSE/#10 A/C | 1 |
| 77 | 50352031 | HOSE/A/C #8 | 1 |
| 78 | 50352061 | TUBE/AC/#6 | 1 |
| 79 | 50352401 | HOSE HEATER 5/8 X 35 | 1 |
| 80 | 50352402 | HOSE HEATER 5/8 X 50 | 1 |
| 81 | 50352403 | HOSE HEATER 5/8 X 14 | 1 |
| 82 | 50352404 | ASSY/BRACKET HEATER VALVE | 1 |
| 83 | 50352424 | SLEEVE HG28 X 27 | 1 |
| 84 | 50352427 | HARNESS/HVAC CHASSIS | 1 |
| 85 | 50352428 | COMPRESSOR/A-C | 1 |
| 86 | 650419 | SCREW/CAP 1/4 X 1-3/4 | 1 |
| 87 | 650579 | SCREW/CAP 3/8 X 1-3/4 | 1 |
| 88 | 650851 | SCREW/CAP 3/8 X 4-1/2 | 4 |
| 89 | 650969 | BOLT/CARRIAGE ROUND HEAD SOCKET SQUARE NECK 5/16 X 5/8 | 4 |
| 90 | 651307 | SCREW/MACHINE PAN HEAD CROSS RECESSED 1/4 X 1/2 | 4 |
| 91 | 651308 | SCREW/MACHINE PAN HEAD CROSS RECESSED 1/4 X 3/4 | 4 |
| 92 | 651395 | SCREW/CAP M10 X 30 MM | 4 |
| 93 | 654049 | WASHER/FLAT 3/8 | 6 |
| 94 | 656001 | SCREW/CAP M8 X 20 MM | 1 |
| 95 | 656110 | WASHER/LOCK M8 | 1 |
| 96 | 656133 | WASHER/FLAT M10 | 3 |
| 97 | 090666 | NUT/LOCK SERRATED FLANGE 3/8 | 2 |

a) For breakdown see "Section B" of this manual.

THANK YOU FOR VISITE WITH

www.repair-manuals.com

DOWNLOAD THIS FULL MANUAL

Until download and place it on your computer We care with you ,We really try our best to complete your orders, so your review is very important to us to improve our services

WE OFFER

ORIGINAL FACTORY MANUALS , WORKSHOP
MANUALS , SERVICE MANUALS , REPAIR

OUR VISION : 100 % CUSTOMER SATISFACTION,
AFTER SALE SERVICE AND KEEP IN TOUCH WITH